



## THE UNIVERSAL TOOL FOR SHALLOW AND MEDIUM-DEPTH TILLAGE

						
<b>Type</b> Semi-carried	<b>Working range</b> 3, 4.15 and 5.4 m	<b>Working speed</b> up to 10 km/h	<b>Working depth</b> up to 35 cm	<b>Overload protection</b> non-stop hydropneumatic	<b>Application</b> shallow and deep tillage	<b>EU homologation</b>

### APPLICATION

- for shallow and medium-depth tillage in one pass
- use even for first post-harvest tillage
- cutting and mixing large quantities of post-harvest residues
- soil cultivation up to a depth of 35 cm
- levelling and consolidation of the soil
- aeration of the soil and improvement of water infiltration
- the result is fine and crumbly soil for easy sowing
- saving time and operating costs
- minimising soil compaction by repeatedly driving different equipment into the field

### ACCESSORIES

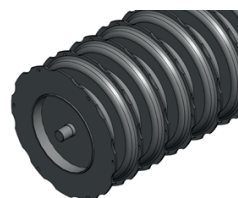


- LEVELLING SPRINGS**
- for light and medium soils

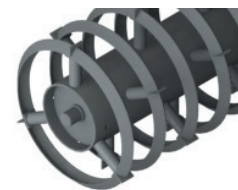
### ROLLERS



- TUBULAR ROLLER**
- ø 540 mm
  - Standard roller type suitable for all common conditions



- DDL ROLLER**
- ø 565 mm
  - excellent crumbling and compacting effect



- CRACKER ROLLER**
- ø 540 mm
  - excellent crushing effect, designed for stone-free soils

### STRAIGHTENING SECTION



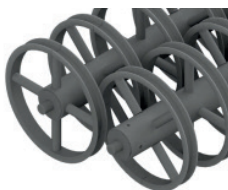
- LEVELLING DISCS**
- excellent straightening effect
  - for all soil types



- SPRING ROLLER**
- ø 520 mm
  - higher resistance to sticking



- U-ROLLER**
- ø 540 mm
  - excellent crushing effect



- DOUBLE U-ROLLER**
- ø 540 mm
  - excellent self-cleaning and crushing effect

## THE FIRST SEASON WITH FINISHER MEANT MAXIMUM EFFICIENCY AND SAVINGS

„Impressions of the machine after the first season are positive. We have deployed it to incorporate sunflower residue when we need it to be cut and mixed as much as possible and the FINISHER has been perfect for this. In addition, by combining several working sections, it saves us time and costs, as we don't have to repeatedly drive the machine into the field, and once it's done its work, we have well prepared soil for the actual sowing.”

„We chose the FINISHER from SMS CZ not only because of its technical characteristics and its robustness and durability at first sight, but also because of its good price-quality ratio.”



**Zdeňka Tukačová and Miluše Vudková**  
owners of the agricultural cooperative Jonesův dvůr  
**region:** Hustopeče (Moravia)  
**farm focus:** crop production, corn, wheat  
**area:** 600 ha

**SMS**  
AGRO



@smscz.machinery



@smscz\_machinery

**WWW.SMSCZ.CZ**

**SMS CZ s. r. o.**  
smscz@smscz.cz

U Saské brány 12, Rokycany, 337 01  
+420 371 722 137



Funded by  
the European Union

**SMS**  
AGRO

## COMBINED CULTIVATOR FINISHER

Peak performance in one pass



**WWW.SMSCZ.CZ**





UNIVERSAL TOOLS WITH  
HIGH PERFORMANCE

FINISHER combines several work operations in one pass. The front disc section takes care of shallow subsoiling and cutting plant residues. This is followed by a section with three rows of coulters for deep tillage up to 35 cm. Behind them is the section for backfilling the soil with levelling spring or discs, and everything is rounded off with a support roller that levels the soil. The high weight of the machine and the new modern concept guarantee medium-depth tillage from the first pass over the field, saving time and costs.



TECHNICAL DATA

FINISHER		300	400	520
Working width	[cm]	300	415	540
Transport width	[cm]	300	280	280
Min. tractor power	[kW/HP]	140/190	180/240	220/300
No. of discs / diameter of discs	[mm]	22/510	32/510	44/510
No. of shares / spacing between shares	[mm]	9/325	13/310	17/310
Number of straightening discs / springs		8	10	12
Max. working depth	[cm]	35	35	35
Transport wheels		19/45-17	550/45-22,5	550/45-22,5
Weight*	[kg]	3300-4000	4900-5700	5600-6500
Working speed	[km/h]	6-10		
Connection		eye ø 51 (standard), K80		

\* Depending on the selected machine specification.

FINISHER 400 AND 520



Non-stop hydropneumatic tines protection

A 2023 machine innovation has introduced non-stop hydropneumatic tines protection, allowing a working depth of up to 35 cm on the first pass. The share protection force can be adjusted by hydraulics between 400-700 kg at the chisel tip.



Wide spacing of working sections for high throughput of plant residues

Due to the extended spacing of the individual working bodies and the three rows of 310 mm (400 and 520 models) and 325 mm (300 model) rows, excellent crop residue throughput is ensured, even at maximum working speeds.



Two rows of discs

The 51 cm diameter discs are mounted on maintenance-free bearings on high-strength arms. This is a maintenance-free solution that also allows the discs to be guided in different conditions at all times.



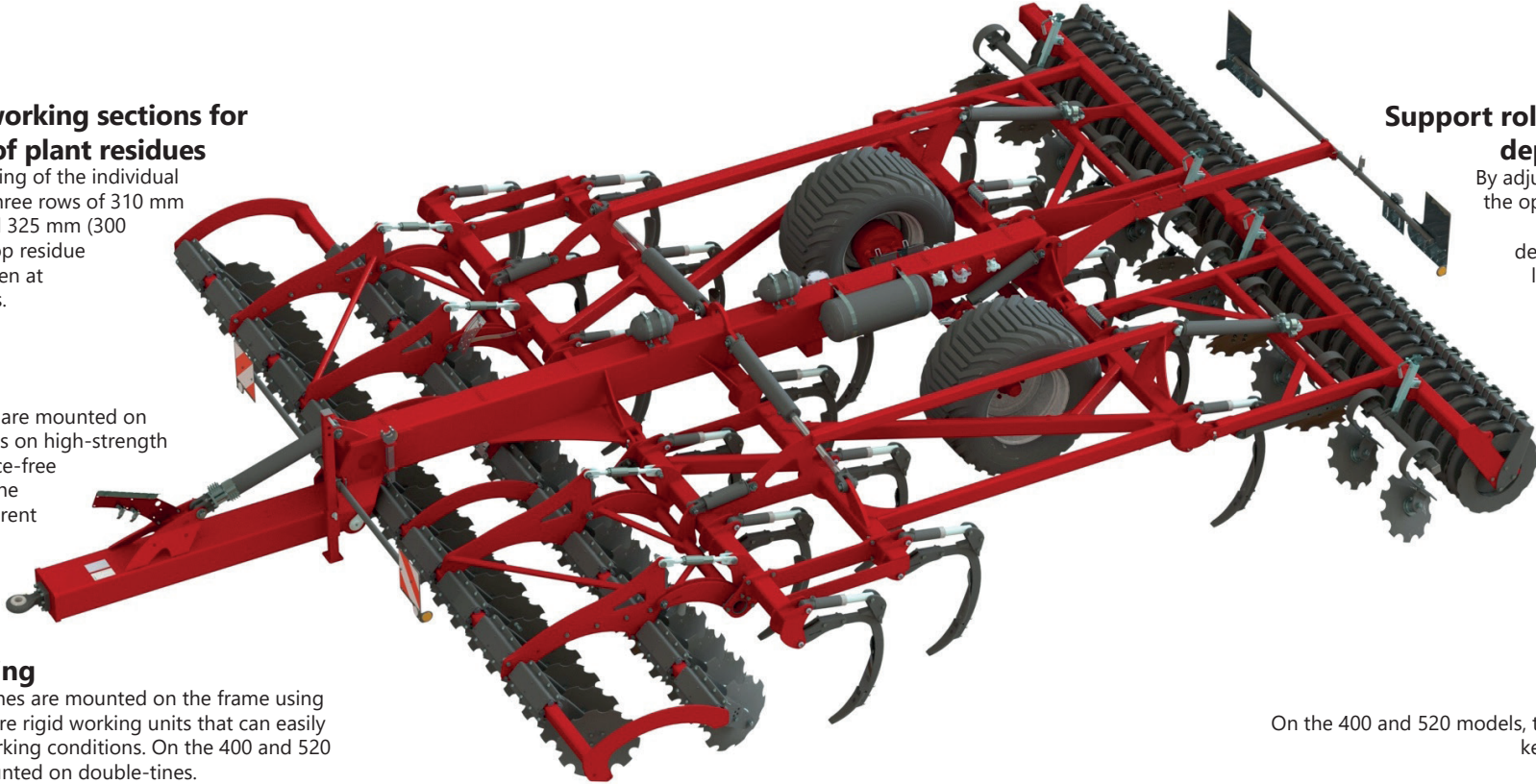
Firm tines mounting

The high-strength steel tines are mounted on the frame using rubber silent blocks and are rigid working units that can easily cope with demanding working conditions. On the 400 and 520 models, the discs are mounted on double-tines.



Hydraulically folded frame (models 400 and 520) into transport position

In the transport position of the 400 and 520 models, the two wings of the machine are raised perpendicular to the machine frame, the machine is then 2.8 m wide, allowing movement on public roads.



Easy control of the machine by hydraulics

Using hydraulic circuits, the operator can easily adjust the height of the machine and individual working sections from the tractor cab, control the folding of the machine into transport position or the stiffness of the tine.

Support roller for adjusting the working depth and levelling the soil bed

By adjusting the height of the rear support roller, the operator controls the overall working height of the entire machine. At the same time, depending on the type of roller selected, the lumps are crushed and the compacted and compacted soil is compacted and levelled.

Levelling section for levelling worked soil

The share section is followed by the levelling section, where the operator has a choice of maintenance-free levelling discs or levelling springs, depending on soil conditions.

Good copying properties

On the 400 and 520 models, the individual wings lock during operation, keeping the entire machine stable and level.

Integrated axle for easy manoeuvrability, machine load in center and maintaining its working height

The integrated axle between the 2nd and 3rd row of the axles efficiently loads the machine during work and helps to maintain height in wet conditions and improves manoeuvrability during transport.



FINISHER 300



Semi-carried version of the machine consisting of one fixed frame with a working width of 3 m



The overall width of the machine (3 m) allows transport on public roads



The axial spacing of the hydro-pneumatically secured tines is 325 mm



Wide range of accessories as for the 400 and 520 models

