

TALON GREEN

FOR GENTLE PASTURE REGENERATION



Type
mounted



Working depth
up to 35 cm



Working width
3 m



Working speed
up to 8 km/h



Application
deep loosening of
permanent grasslands

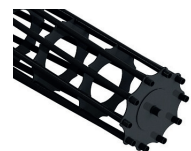
- Designed for the maintenance and regeneration of permanent grasslands
- The shape of the tines is adapted to meadow conditions
- Cuts through the turf without mixing, tearing, or damaging the vegetation, improving water infiltration into the soil
- Working depth up to 35 cm
- Tines are laterally adjustable and protected against overload by a shear bolt or hydropneumatic system
- A wide range of rear rollers is available to close and firm the turf
- Easy lateral adjustment or replacement of individual tines



TECHNICAL DATA

TALON GREEN	300/4
Number of tines	4
Working width	[cm] 300
Transport width	[cm] 300
Max. working depth	[cm] 35
Min. tractor power	[kW/HP] 120/160
Working speed	[km/h] 3-8
Hitch	cat. 3

SUPPORT ROLLERS



Tubular roller

- ø 540 mm
- Serves as a rear support roller



Z ring roller in-rows

- ø 500/550 mm
- Ductile iron GGG 50
- Works in strips, closing the groove behind each tine individually



Z ring roller complete

- ø 500/550 mm
- Ductile iron GGG 50
- Across the full working width, providing excellent effect on grassland regeneration

The TALON subsoiler range includes a wide selection of models designed for various applications according to farmers' needs — from soil loosening to permanent grassland management. The machine's main frame is made of high-strength steel and equipped with individual working elements. Additionally, customers can adjust the tine spacing and amount according to their requirements. The tines are protected against overload by a shear bolt or a hydropneumatic system, depending on the model. The TALON KOMBI model can be combined with other implements (e.g., rotary harrows, cultivators, etc.), while the TALON CLASSIC and GREEN models can be equipped with support rollers, with several types available to choose from.



APPLICATION

- Loosening and aeration of the soil up to a depth of 45 cm (35 cm for the model designed for grassland use) without active mixing
- Reduces the risk of soil erosion
- Breaks up the subsoil layer
- Restores water infiltration
- Improves capillary rise
- TALON KOMBI and CLASSIC are designed for soil loosening, while TALON GREEN is intended for meadow and pasture maintenance



SMS

AGRO



@smscz.machinery



@smscz_machinery

WWW.SMSCZ.CZ

SMS CZ s. r. o.
smscz@smscz.cz

U Saské brány 12, Rokycany, 337 01
+420 371 722 137



Funded by
the European Union

SMS

AGRO

SUBSOILERS

TALON

Soil loosening without compromise



WWW.SMSCZ.CZ



TALON CLASSIC

ROBUST, EFFICIENT, AND CAPABLE OF HANDLING
EVEN THE TOUGHEST SOIL



Type
mounted



Working depth
up to 45 cm



Working width
3 - 5,9 m



Working speed
up to 8 km/h



Application
deep soil
loosening

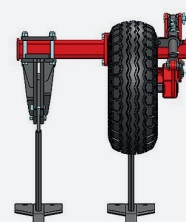
- Designed for deep soil loosening
- V-shaped main frame ensures smooth operation even in heavy terrain
- Working depth up to 45 cm, easily adjustable using support wheels
- Available with curved or straight tines and two types of overload protection: shear bolt or hydropneumatic
- Option to equip the machine with support and crumbler rollers
- Easy lateral adjustment or replacement of individual tines
- Adjustable working angle



TYPES OF TINES

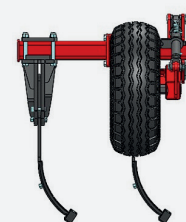
They preserve the soil profile, making them suitable for soils where structure and layers need to be protected (e.g. in regenerative farming).

STRAIGHT



- Even soil cultivation across the entire working width of the machine

CURVED



- They generate less resistance with the same number of tines, thus requiring lower pulling power

TYPES OF TINE PROTECTION



Shear bolt

The tines are protected by a shear bolt that breaks upon impact with an obstacle, allowing the tine to fold backward



Hydropneumatic

Each tine is protected by a hydraulic cylinder with a nitrogen accumulator that maintains variable pressure – when hitting an obstacle, the pressure drops and the tine lifts, then automatically returns to its working position

SUPPORT ROLLERS



Tubular roller

- ø 540 mm
- Serves as a rear support roller with a good crumbling effect



Double wavy roller

- ø 450 mm
- The rear support roller is used for cutting crop residues, e.g., after maize

THREE DESIGN TYPES

Talon Classic is available in working widths from 3 to 5,9 meters.

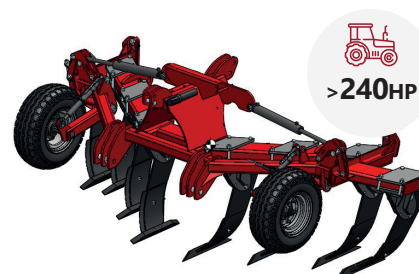
Depending on the working width, the frame design varies — from a single rigid frame to hydraulically folding versions, reducing transport width and allowing safe road transport.



>200HP

300 - 400

Single-piece rigid frame
Mounted machine



>240HP

400 H

Three-piece hydr. foldable frame
Mounted machine



>255HP

480 H - 590 H

Three-piece hydr. foldable frame
Mounted machine

TALON KOMBI

SUBSOILER AND TOOL CARRIER IN ONE



Type
mounted



Working depth
up to 45 cm



Working width
3 - 4 m



Working speed
up to 8 km/h



Application
deep soil
cultivation

- Designed for deep soil cultivation
- Working depth up to 45 cm
- Three-point hitch control can be mechanical or hydraulic, depending on the farmer's needs
- Equipped with its own three-point hitch for aggregation with other implements
- Model 400/8H features a three-section hydraulically folding frame
- Easy lateral adjustment or replacement of individual tines
- Adjustable working angle



TECHNICAL DATA

TALON CLASSIC	300/6	400/8	400/8H	480/8H	590/10H
Working width [cm]	300	400	400	480	590
Transport width [cm]	296	396	299	290	290
Number of tines	6	8	8	8	10
Max. working depth [cm]	45	45	45	45	45
Weight* [kg]	1160	1410	1620	3030	3190
Min. tractor power [kW/HP]	150/200	180/240	180/240	190/255	210/280
Working speed [km/h]	5 - 8	5 - 8	5 - 8	5 - 8	5 - 8
Frame	V-frame, single-piece		V-frame, hydr. foldable		
Three point linkage	cat. III, IV				

* Depending on the selected specification

TALON KOMBI		300/6	400/8	400/8H
Working width	[cm]	300	400	400
Transport width	[cm]	300	400	299
Number of tines		6	8	8
Max. working depth	[cm]	45	45	45
Min. weight	[kg]	980	1420	1510
Min. tractor power	[kW/HP]	150/200	170/230	170/230
Working speed	[km/h]	5 - 8	5 - 8	5 - 8
Three point linkage		cat. III		